

Space Odyssey

Designed by Heidi Pridemore

Featuring *Out of this World* by Whistler Studios

SIZE: 61" x 61"



FREE
PROJECT

THIS IS A DIGITAL REPRESENTATION OF THE QUILT TOP, FABRIC MAY VARY.

PLEASE NOTE: BEFORE MAKING YOUR PROJECT, CHECK FOR ANY PATTERN UPDATES AT WINDHAMFABRICS.COM'S FREE PROJECTS SECTION.



Out of this World

KEY	FABRIC	SKU	YD	CUTTING INSTRUCTIONS
A		50782-7 white on white	1/2	<ul style="list-style-type: none">• Cut (3) 3-1/2" x Width of Fabric (WOF) strips. Sub-cut the strips into (32) 3-1/2" squares.• See instructions to cut (11) Small Stars.
B		50777-2 blue	1/4	<ul style="list-style-type: none">• Cut (1) 3-1/2" x WOF strip. Sub-cut the strip into (4) 3-1/2" squares.
C		50780-4 flame	1/4	<ul style="list-style-type: none">• Cut (1) 3-1/2" x WOF strip. Sub-cut the strip into (8) 3-1/2" squares.
D		50779-1 black	1/4	<ul style="list-style-type: none">• Cut (1) 3-1/2" x WOF strip. Sub-cut the strip into (8) 3-1/2" squares.
E		50782-1 black	1/4	<ul style="list-style-type: none">• Cut (1) 3-1/2" x WOF strip. Sub-cut the strip into (8) 3-1/2" squares.• See instructions to cut (4) Rocket Window Frames.
F		50778-2 blue	1/4	<ul style="list-style-type: none">• Cut (1) 3-1/2" x WOF strip. Sub-cut the strip into (4) 3-1/2" squares.
G		50782-6 sun	3/8	<ul style="list-style-type: none">• Cut (2) 3-1/2" x WOF strips. Sub-cut the strips into (16) 3-1/2" squares.• See instructions to cut nine Large Stars.
H		50781-4 flame	3/4	<ul style="list-style-type: none">• Cut (1) 3-1/2" x WOF strip. Sub-cut the strip into (8) 3-1/2" squares. <p>FOR BINDING:</p> <ul style="list-style-type: none">• Cut (7) 2-1/2" x WOF strips for the binding.
I		50780-2 blue	1/4	<ul style="list-style-type: none">• Cut (1) 3-1/2" x WOF strip. Sub-cut the strip into (4) 3-1/2" squares.
J		50779-2 blue	1/4	<ul style="list-style-type: none">• Cut (1) 3-1/2" x WOF strip. Sub-cut the strip into (4) 3-1/2" squares.
K		50780-3 white	2/3	<ul style="list-style-type: none">• Cut (3) 3-1/2" x WOF strips. Sub-cut the strips into (32) 3-1/2" squares.

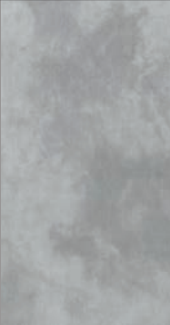
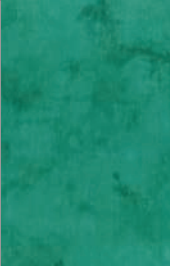


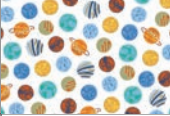


Out of this World

KEY	FABRIC	SKU	YD	CUTTING INSTRUCTIONS
L		50781-1 black	2/3	<ul style="list-style-type: none"> • Cut (3) 2" x WOF strips. Sew the strips together end to end with diagonal seams and cut (2) 2" x 51-1/2" strips. • Cut (3) 2" x WOF strips. Sew the strips together end to end with diagonal seams and cut (2) 2" x 48-1/2" strips. • Cut (2) 2" x 24-1/2" WOF strips. • Cut (2) 2" x 21-1/2" WOF strips.
M		50778-1 black	1	<ul style="list-style-type: none"> • Cut (1) 21-1/2" square. • Cut (1) 10-1/2" x WOF strip. Sub-cut the strip into (4) 10-1/2" squares.
N		50776-1 black	1-1/4	<ul style="list-style-type: none"> • Cut (4) 5-1/2" x WOF strips. Sew the strips together end to end with diagonal seams and cut (2) 5-1/2" x 61-1/2" strips. • Cut (3) 5 1/2" x WOF strips. Sew the strips together end to end with diagonal seams and cut (2) 5-1/2" x 51-1/2" strips.
O		37098-17 papaya	3/8	<ul style="list-style-type: none"> • Cut (2) 1-1/2" x WOF strips. Sub-cut the strips into (4) 1-1/2" x 12-1/2" strips. • Cut (1) 1-1/2" x WOF strip. Sub-cut the strip into (4) 1-1/2" x 10-1/2" strips. • See instruction to cut (2) Rocket Large Right Fins. • See instruction to cut (2) Rocket Large Left Fins. • See instruction to cut (1) Space Station Top. • See instruction to cut (1) Space Station Small Outer Ring. • See instruction to cut (2) Rocket Small Right Fins. • See instruction to cut (2) Rocket Small Left Fins.
P		37098-22 cardinal	1/3	<ul style="list-style-type: none"> • See instructions to cut (2) Rocket Base. • See instructions to cut (1) Space Station Top Module. • See instructions to cut (1) Space Station Botom Module. • See instructions to cut (1) Space Station Small Inner Ring. • See instructions to cut (2) Rocket Nose Cone Trim. • See instructions to cut (1) Space Ship #1 Body. • See instructions to cut (1) Space Ship #2 Body.



Out of this World

KEY	FABRIC	SKU	YD	CUTTING INSTRUCTIONS
Q		37098-2 ash	1/4	<ul style="list-style-type: none"> • See instructions to cut (3) Space Ship #1 Windows. • See instructions to cut (3) Space Ship #2 Windows. • See instructions to cut (4) Rocket Windows. • See instructions to cut (2) Rocket Thrusters. • See instructions to cut (2) Rocket Nose Cones. • See instructions to cut (7) Space Station Large Windows. • See instructions to cut (5) Space Station Small Windows. • See instructions to cut (1) Space Ship #1 Windshield. • See instructions to cut (1) Space Ship #2 Windshield.
R		37098-34 spruce	1/4	<ul style="list-style-type: none"> • See instructions to cut (1) Space Ship #2 Right Wing. • See instructions to cut (1) Space Ship #2 Left Wing. • See instructions to cut (1) Space Station Large Outer Ring. • See instructions to cut (1) Space Ship #1 Right Wing. • See instructions to cut (1) Space Ship #1 Left Wing. • See instructions to cut (1) Space Ship #1 Tail. • See instructions to cut (1) Space Ship #2 Tail.
S		37098-13 saffron	1/4	<ul style="list-style-type: none"> • See instructions to cut (1) Space Station Shaft. • See instructions to cut (2) Rocket Bodies. • See instructions to cut (1) Space Ship #1 Stripe. • See instructions to cut (1) Space Ship #2 Stripe.
T		37098-44 tropical green	1/3	<ul style="list-style-type: none"> • Cut (2) 1-1/2" x WOF strips. Sub-cut the strips into (4) 1-1/2" x 12-1/2" strips. • Cut (1) 1-1/2" x WOF strip. Sub-cut the strips into (4) 1-1/2" x 10-1/2" strips. • See instructions to cut (1) Space Station Inner Ring.
		50777-3 white Backing	4	<ul style="list-style-type: none"> • Cut (2) 69" x WOF strips. Sew the strips together and trim to 69" x 69" for the pieced back.
				Batting 69" x 69"



Out of this World

Block Assembly

1. Refer to **Figure 1** to sew together (8) assorted 3-1/2" squares for Row 1 as shown. Repeat to make Row 2, Row 3 and Row 4. Sew the rows together, in numerical order, to make (1) **Block One** strip. Repeat to make (4) **Block One** strips total.

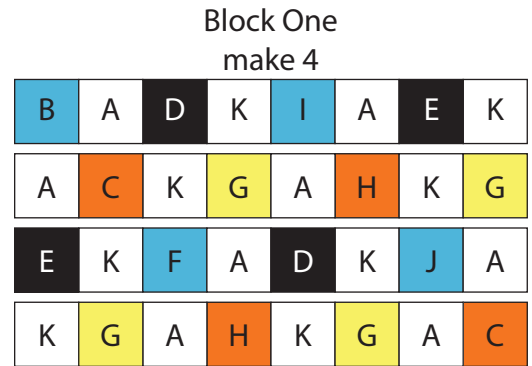


Fig. 1

2. Sew (1) **L** 2" x 21-1/2" strip to each side of (1) **M** 21-1/2" square. Sew (1) **L** 2" x 24-1/2" strip to the top and bottom of the **M** 21-1/2" square to make (1) **Unit 1** square (**Fig. 2**).

3. Following the manufacturer's instructions, trace the listed number of each template onto the paper side of the fusible web. Roughly cut out each template about 1/8" outside the drawn lines.

4. Press each template onto the wrong side of the fabrics as listed on the templates. Cut out each template on the drawn lines.

5. Refer to the cover image and **Figure 3** to arrange and press the **Space Station** and **Stars** onto the **Unit 1** square to make (1) **Block Two** square.

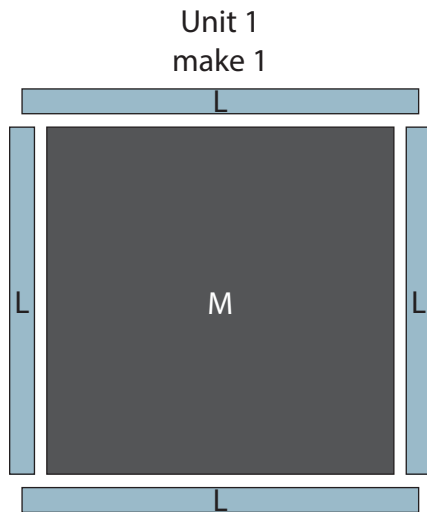


Fig. 2

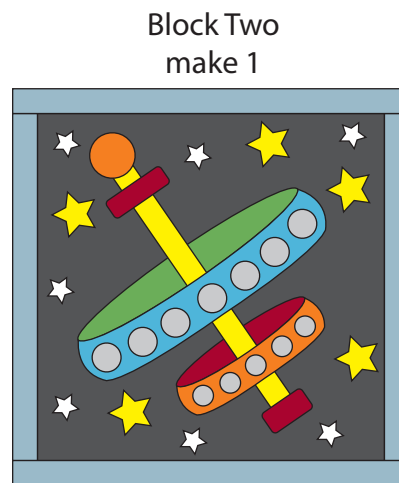


Fig. 3

6. Finish the raw edges with a decorative stitch such as a blanket or satin stitch.



Out of this World

7. Sew (1) **O** 1-1/2" x 10-1/2" strip to each side of (1) **M** 10-1/2" square. Sew (1) **O** 1-1/2" x 12-1/2" strip to the top and bottom of the **M** square to make (1) **Unit 2** square (**Fig. 4**). Repeat to make (2) **Unit 2** squares total.

8. Sew (1) **T** 1-1/2" x 10-1/2" strip to each side of (1) **M** 10-1/2" square. Sew (1) **T** 1-1/2" x 12-1/2" strip to the top and bottom of the **M** square to make (1) **Unit 3** square (**Fig. 5**). Repeat to make (2) **Unit 3** squares total.

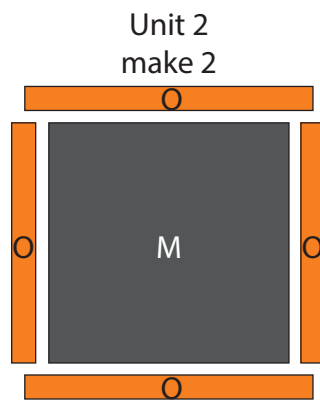


Fig. 4

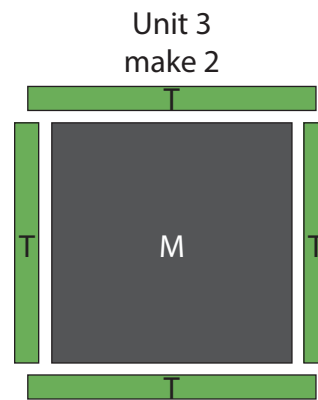


Fig. 5

9. Refer to the cover image and **Figure 6** to arrange and press the right facing red rocket and stars onto (1) **Unit 2** square to make (1) **Block Three** square.

10. Refer to the cover image and **Figure 7** to arrange and press the left facing red rocket and stars onto (1) **Unit 2** square to make one Block Four square.

11. Refer to the cover image and **Figure 8** to arrange and press the yellow rocket and stars onto (1) **Unit 3** square to make (1) **Block Five** square. Repeat to make (2) **Block Five** squares total.

12. Finish the raw edges on **Block Three**, **Block Four** and **Block Five** with a decorative stitch such as a blanket or satin stitch.



Fig. 6



Fig. 7



Fig. 8



Out of this World

Quilt Top Assembly

(Refer to the Quilt Diagram while assembling the quilt top.)

13. Sew together (1) **Block Three** square, (1) **Block One** strip and (1) **Block Five** square to make the **Row One**.
14. Sew (1) **Block One** strip to each side of (1) **Block Two** square, paying attention to the block direction, to make **Row Two**.
15. Sew together (1) **Block Five** square, (1) **Block One** strip and (1) **Block Four** square to make **Row Three**.
16. Sew the rows together, in numerical order, to make the **Center Block**.
17. Sew (1) **L** 2" x 48-1/2" strip to each side of the **Center Block**. Sew (1) **L** 2" x 51-1/2" strip to the top and bottom of the **Center Block**.
18. Sew (1) **N** 5-1/2" x 51-1/2" strip to each side of the **Center Block**. Sew (1) **N** 5-1/2" x 61-1/2" strip to the top and bottom of the **Center Block** to make the quilt top.

Finishing

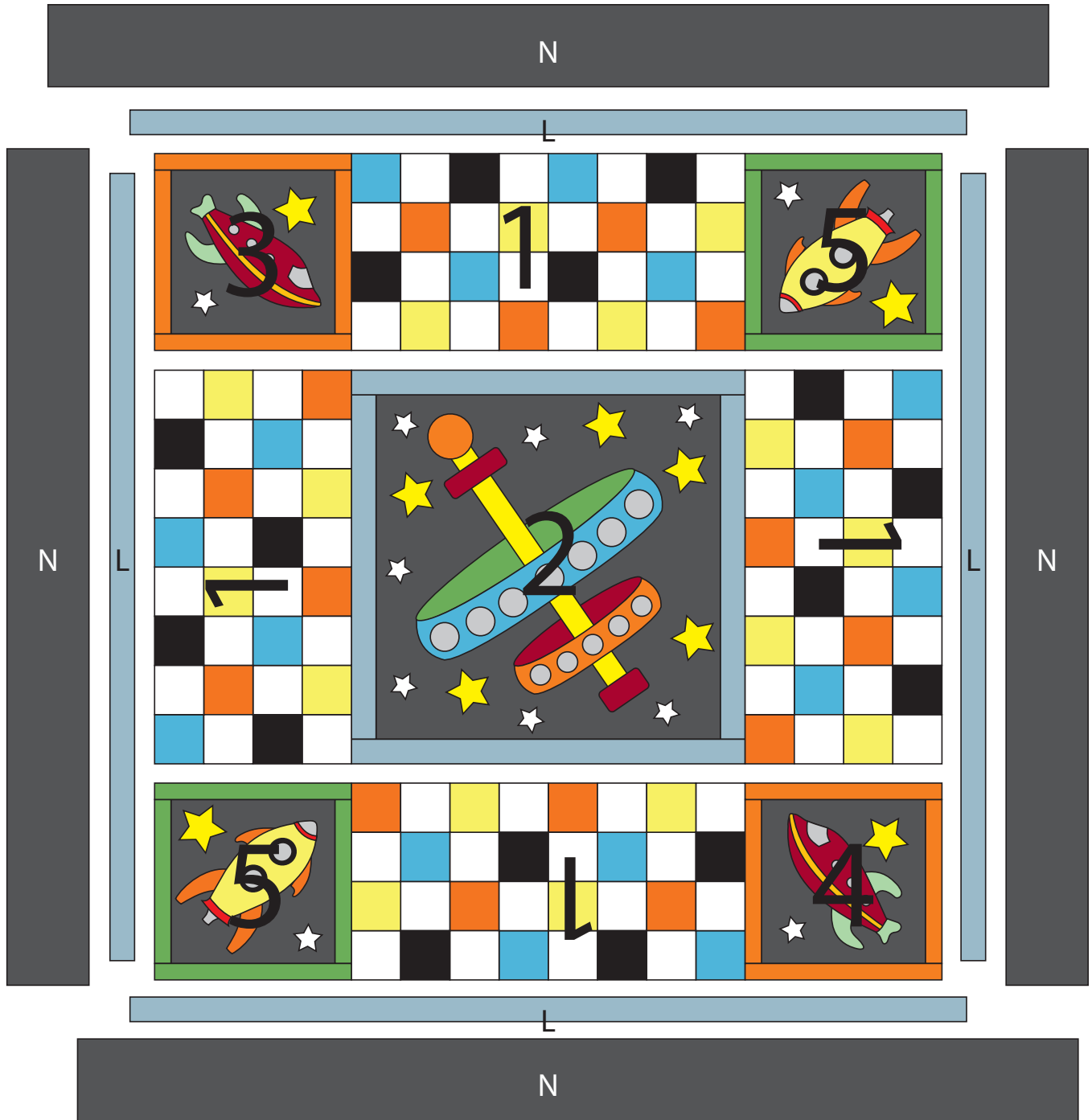
19. Layer and quilt as desired.
20. Sew the (7) **H** 2-1/2" x WOF strips together end-to-end with 45-degree seams to make the binding. Fold this long strip in half lengthwise with wrong sides together and press.
21. Bind as desired.



Out of this World

SIZE: 61" X 61"

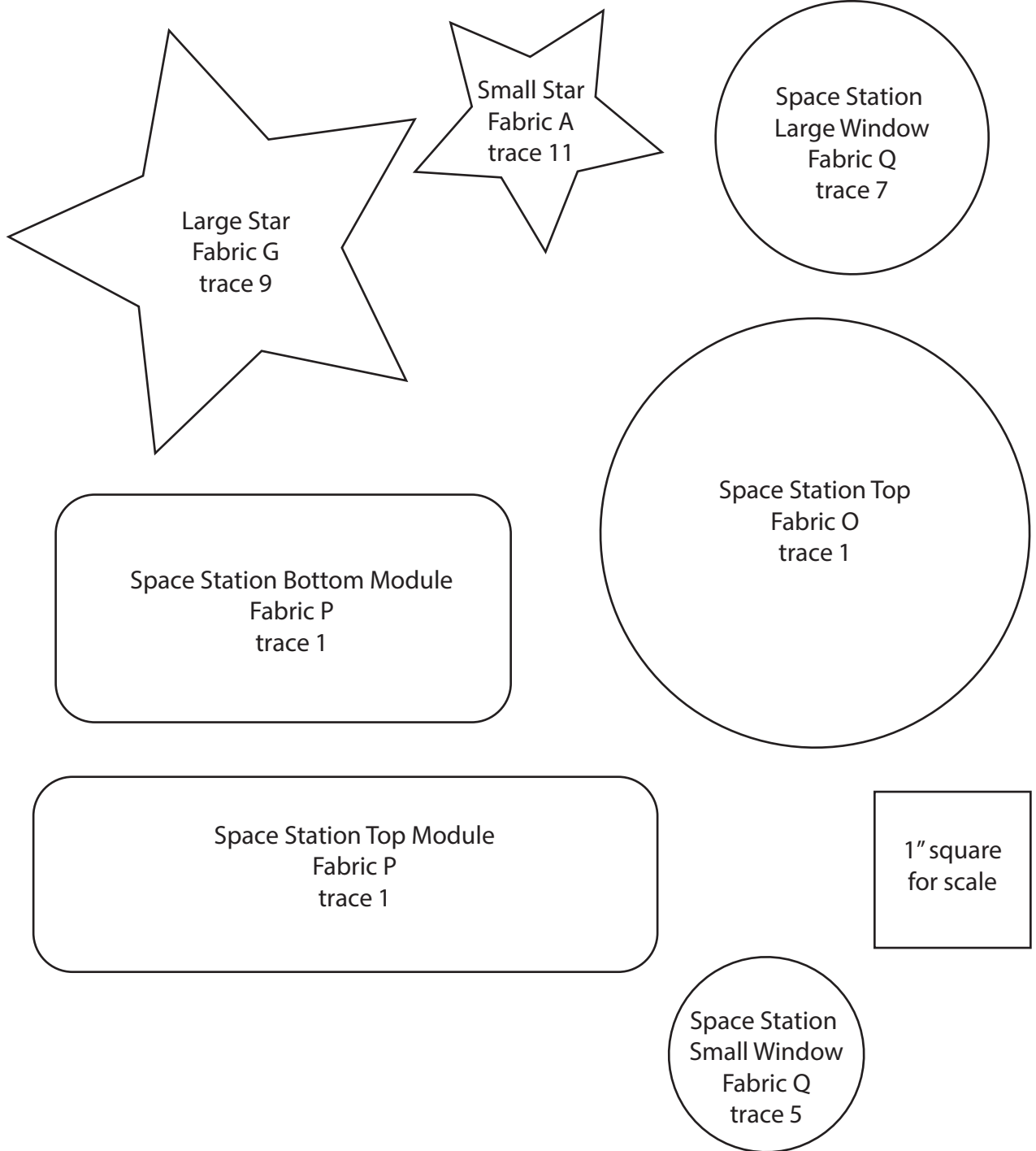
Quilt Diagram





Out of this World

100% Fusible Applique Templates

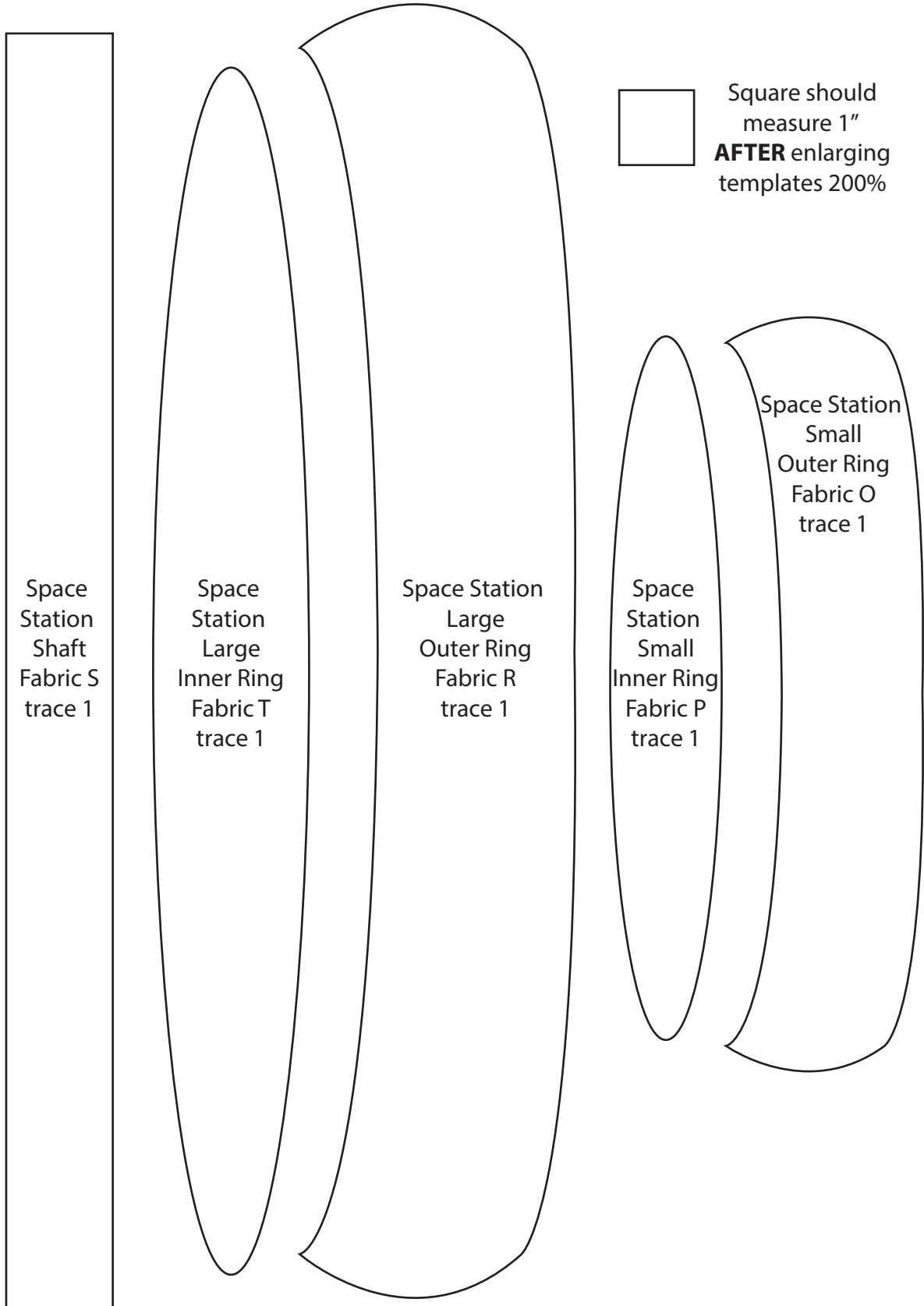




Out of this World

Space Station Fusible Applique Templates

ENLARGE 200%





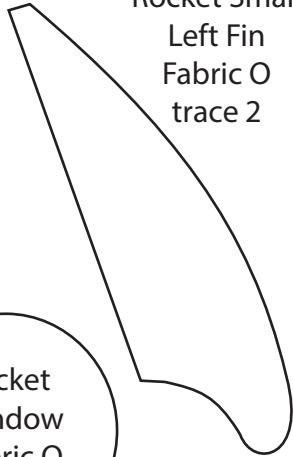
Out of this World

100% Rocket Reversed Fusible Applique Templates

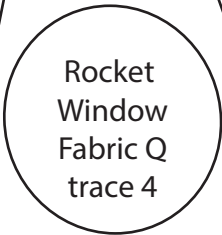
Rocket Small
Right Fin
Fabric O
trace 2



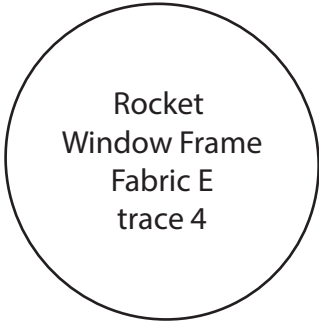
Rocket Small
Left Fin
Fabric O
trace 2



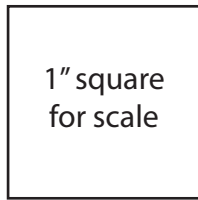
Rocket
Window
Fabric Q
trace 4



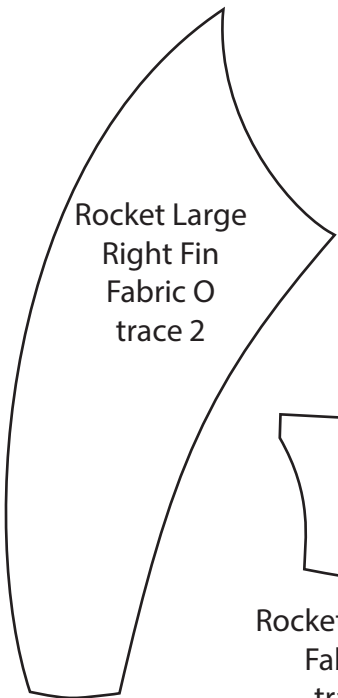
Rocket
Window Frame
Fabric E
trace 4



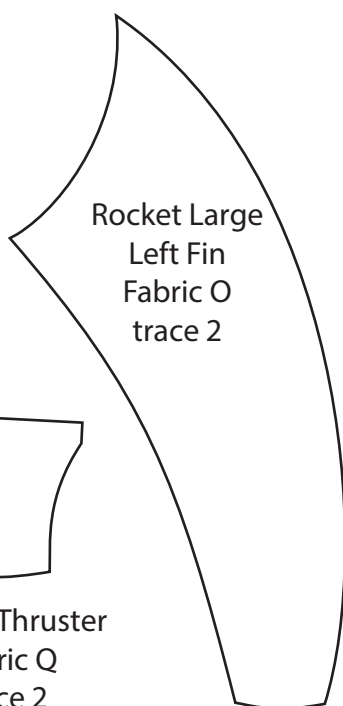
1" square
for scale



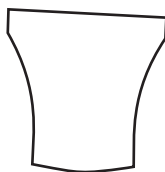
Rocket Large
Right Fin
Fabric O
trace 2



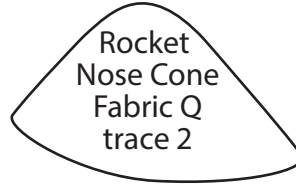
Rocket Large
Left Fin
Fabric O
trace 2



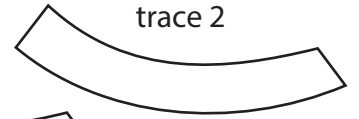
Rocket Thruster
Fabric Q
trace 2



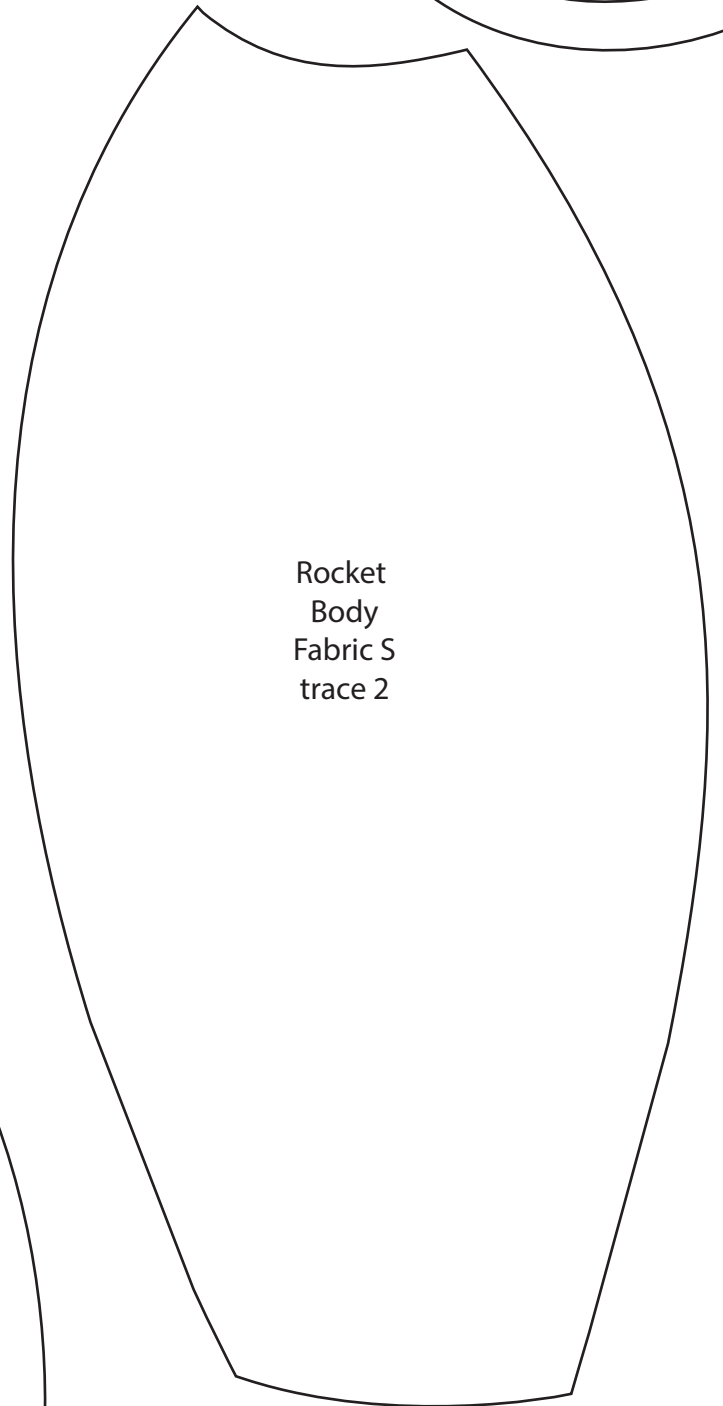
Rocket
Nose Cone
Fabric Q
trace 2



Rocket Nose
Cone Trim
Fabric P
trace 2



Rocket
Body
Fabric S
trace 2



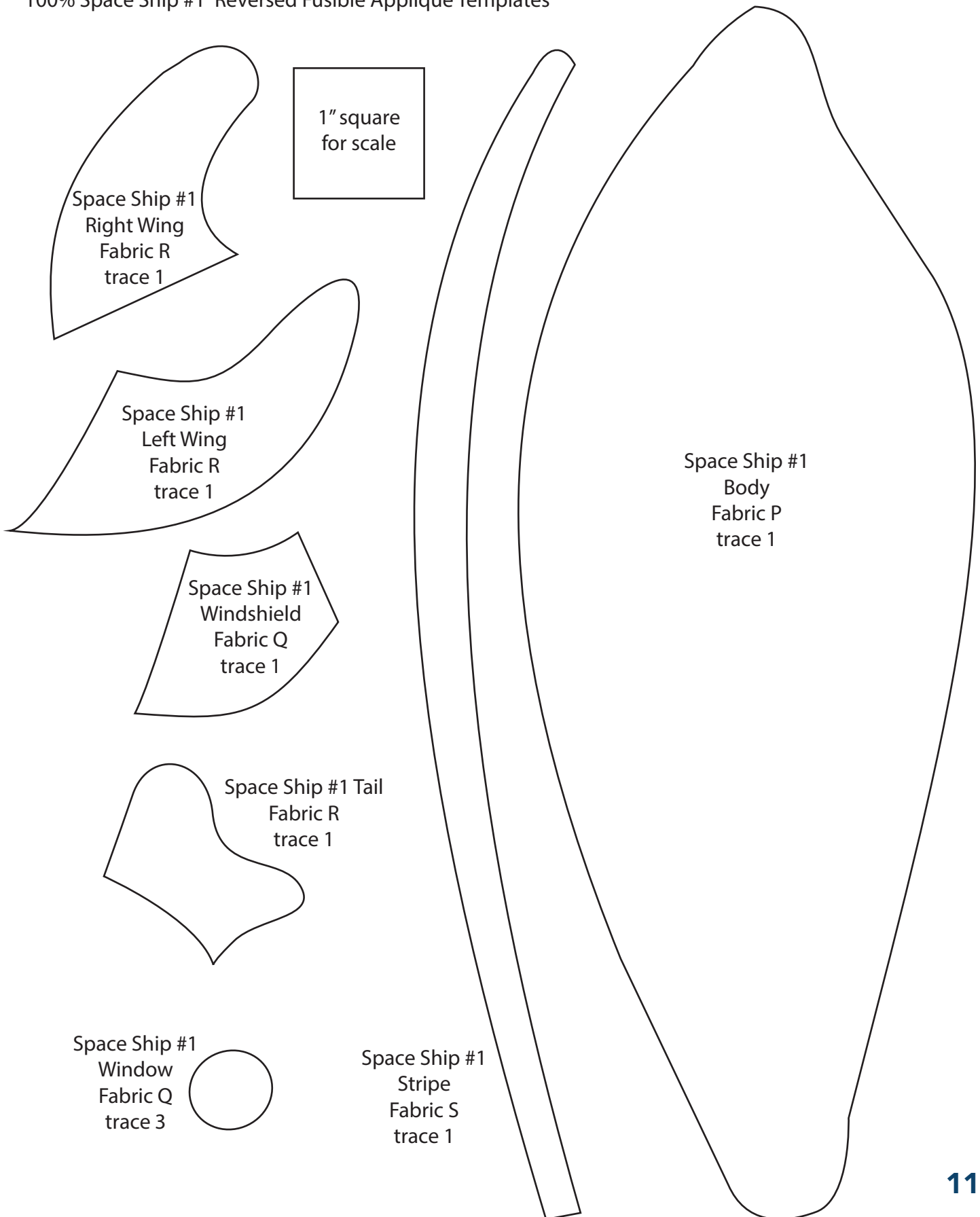
Rocket Base
Fabric P
trace 2





Out of this World

100% Space Ship #1 Reversed Fusible Applique Templates





Out of this World

100% Space Ship #2 Reversed Fusible Applique Templates

